

MANUAL -1

Particulars of Organization, Function and Duties

I. Particulars of Organization

Chief Engineer (Bridges) is the head of the Bridge Department.

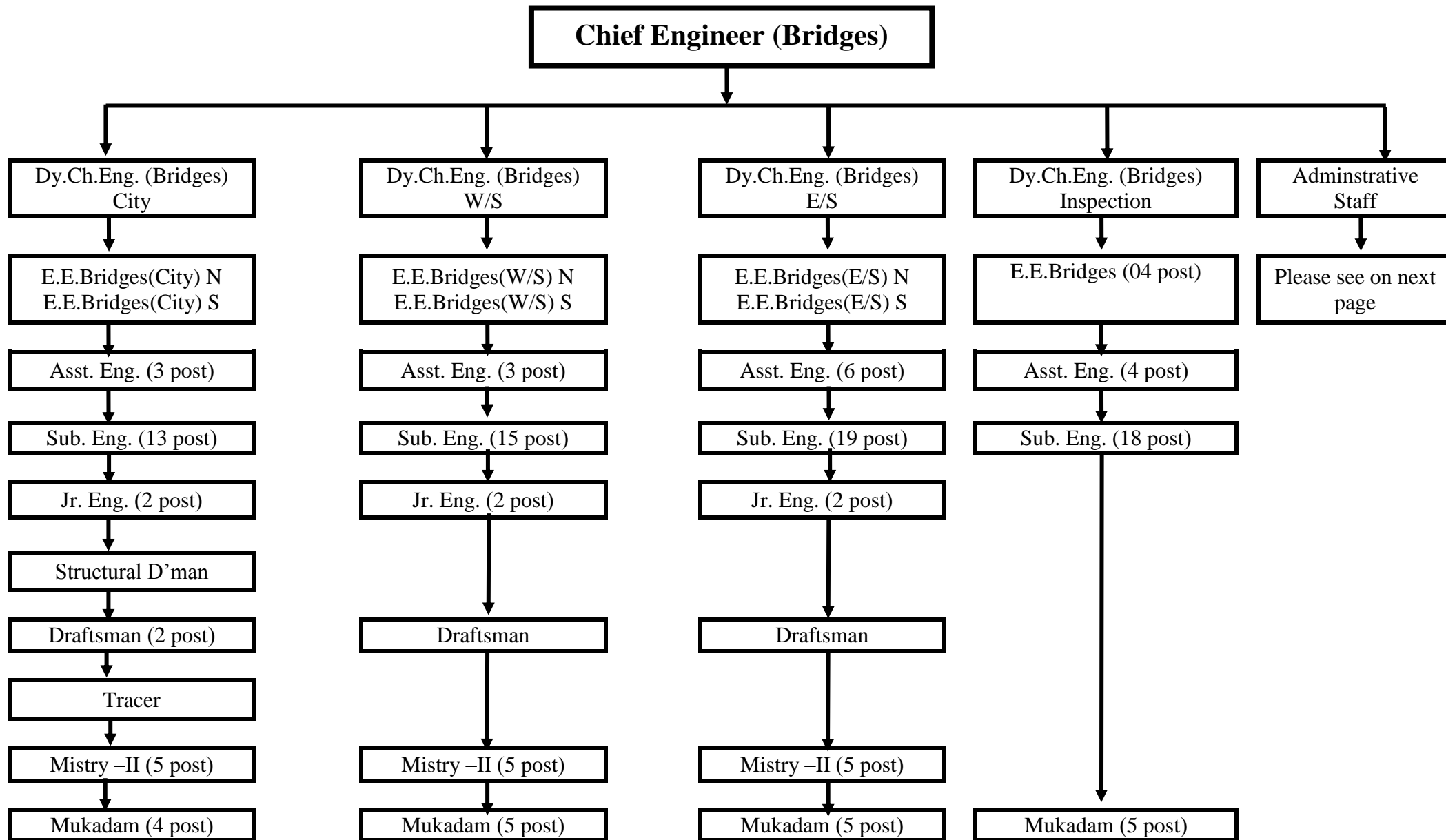
A. In functional setup he is assisted by four numbers of Deputy Chief Engineer (Bridges) viz.

1. Deputy Chief Engineer (Bridges) City
2. Deputy Chief Engineer (Bridges) Eastern Suburb,
3. Deputy Chief Engineer (Bridges) Western Suburb.
4. Deputy Chief Engineer (Bridges) Inspection (At present this post is vacant).

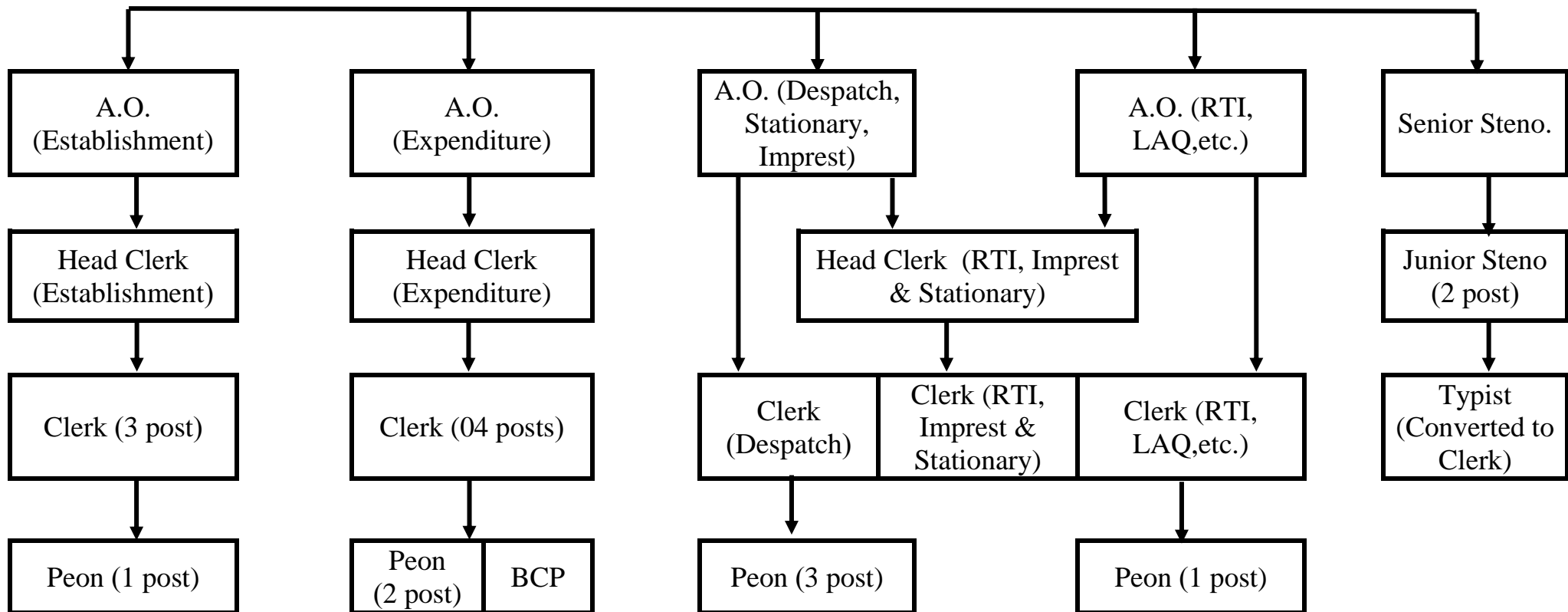
B. The Deputy Chief Engineers are assisted by 10 Executive Engineers according to City, Western Suburb, Eastern Suburb, Divisions.

The office of Chief Engineer (Bridges) is situated at Engineering Hub Building, Zero floor, Near Worli Naka, Dr. E. Moses Road, Worli, Mumbai-400018. Tel. 022-24957924

Organization Structure of Bridge Department



ADMINISTRATIVE STAFF



II. Functions & Duties:-

- i) The Bridge department is headed by Chief Engineer (Bridges) and is looking after Planning, Construction and Maintenance of all the Bridges pertaining to MCGM, in the entire city of Mumbai.
- ii) At present, the Bridge Department is not having the Planning & designing section. The technical consultants are empanelled for every 3 years by prescribing minimum eligibility criteria and by giving public advertisement for selection. These consultants are doing the planning and designing of the projects.
- iii) The agencies for the Construction and Maintenance of the works are selected through public advertisement.